

DB806

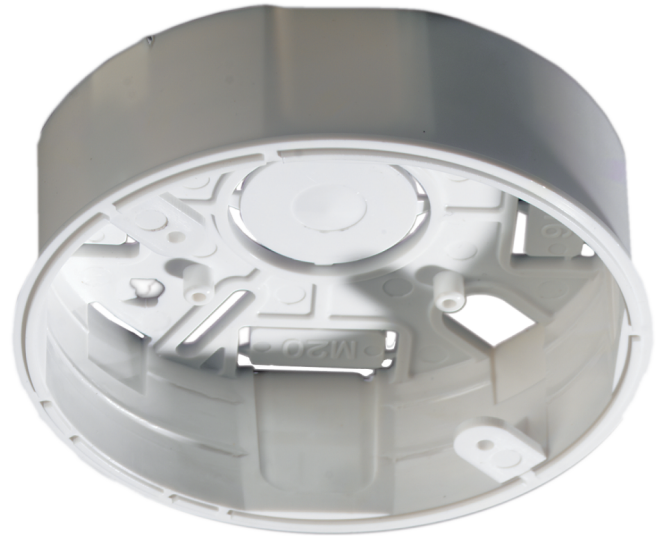
Apollo Series 60/65/XP95/Discovery surface mount conduit box for fire detector bases (45681-204)

General

The DB806 is a versatile accessory for surface mounting fire detector bases. It was specifically designed to be used with 600, 860 and 900 series detectors, but may be used with most industry standard fire detector bases.

Application

The DB806 has knockouts to accept both PG16 or M20 cable glands, conduit or mini-trunking. It is moulded in the same white polycarbonate material as the 600, 860 and 900 series bases and may be installed using either standard or plasterboard screws. Self tapping screws are included to fit the detector base to the conduit box.



Details

- Universal surface mount accessory for 600, 860 and 900 series bases
- Easy to install
- Accepts 16 and 20 mm cable glands or conduit
- Screws to fit base included

DB806

Apollo Series 60/65/XP95/Discovery surface mount conduit box for fire detector bases (45681-204)

Technical specifications

Physical

Physical dimensions	100 x 29 mm (Ø x H) Kockouts: PG16 or M20
Net weight	34 g
Colour	White
Mounting type	Surface mount
Material (body)	Polycarbonate

Environmental

Environment	Indoor
-------------	--------

Compatible products

Category	Reference	Description
Detection device	DB2002	ARITECH 2000 Series standard point detector base
Detection device	DB2016	ARITECH 2000 Series base with isolator
Detection device	DB702	ARITECH Dx700 Series standard point detector base



As a company of innovation, Carrier Fire & Security reserves the right to change product specifications without notice. For the latest product specifications, visit firesecurityproducts.com online or contact your sales representative.

Last updated on 4 June 2024 - 11:15