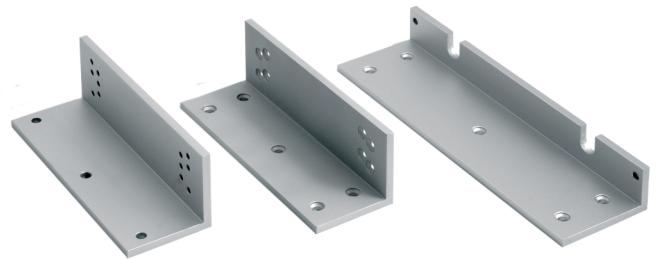


FE160ZL

L and Z Kit for Inward opening Doors for Eco Line Magnets (FE160 series)

Description

For inward opening doors. Mounting brackets for the FE160xx series magnets.



FE160ZL

L and Z Kit for Inward opening Doors for Eco Line Magnets (FE160 series)

Technical specifications

General

Product type	Mounting bracket
--------------	------------------

Holding force

Holding force kgf (Kilogram force)	600 kgf
Holding force N (Newton)	6000

Monitoring & status

Monitored	No
LED indicator	No

Physical

Physical dimensions	185 x 63 x 63 mm (Z bracket) / 266 x 76 x 37 (L bracket)
Colour	Aluminium
Finish	Vapour blasted aluminium



As a company of innovation, Carrier Fire & Security reserves the right to change product specifications without notice. For the latest product specifications, visit firesecurityproducts.com online or contact your sales representative.

Last updated on 29 August 2023 - 16:51