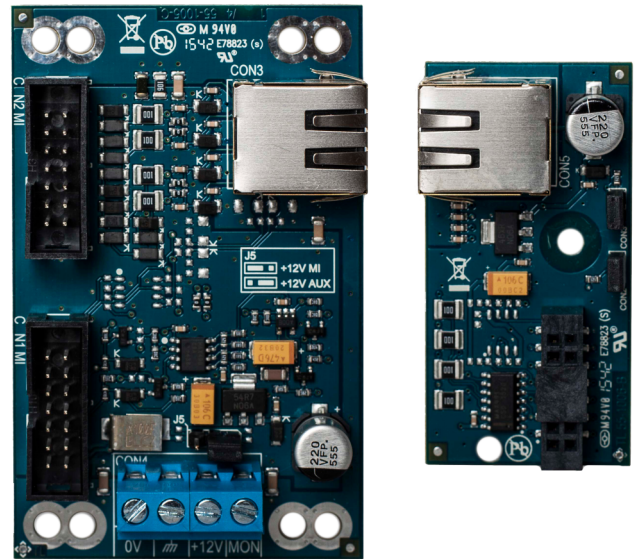


ATS7072

Remote ATS1238 expander kit + housing

Remote ATS1238 expander kit

The ATS7072 offers the possibility to install the ATS1238 outside the housing of the panel.



Details

- Remote installation solution for ATS1238
- Compatible with Axon and Advisor Advanced panels
- Up to 100 m distance
- RJ45 connection between master and slave pcb
- ATS7070 master PCB to be connected to panel MI bus
- ATS7071 slave PCB to be connected to ATS1238 MI connection
- Can be installed into TX-9000-03-1 empty housing
- Kit contains: Master PCB - ATS7070, slave PCB - ATS7071, housing for ATS1238 - TX-9000-03-1, cable - MI-bus flat cable

ATS7072

Remote ATS1238 expander kit + housing

Technical specifications

General

Expander type	Wireless expander
Product line	Advisor Advanced, Axon
Connection type	Plug-in, RJ45
Compatibility	Axon MR1.0 and higher, ATsx000A FW v26.026.0141 and higher, ATsx500A MR3 FW MR3.0.37437, ATsx500A MR4 FW MR4.0.37542 and higher, ATS1238 FW v2.2 and higher
Max. distance from panel	100 m
Max. per panel	1
Specified cable	WCAT54

Electrical

Operating voltage	9.5 to 14.0 VDC
Power consumption	40 mA at 13.8 V (ATS7070) 40 mA at 13.8 V (ATS7071)

Physical

Physical dimensions	50 x 80 mm (ATS7070) 30 x 59 mm (ATS7071)
---------------------	--

Environmental

Operating temperature	0 to +50°C
Relative humidity	95% noncondensing
Environment	EN50130-5 ; Class II - Indoor (general)
IP rating	IP30

Regulatory

Certification	EN50131 Grade 2
---------------	-----------------



As a company of innovation, Carrier Fire & Security reserves the right to change product specifications without notice. For the latest product specifications, visit firesecurityproducts.com online or contact your sales representative.

Last updated on 2 September 2024 - 11:06